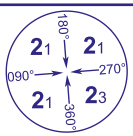
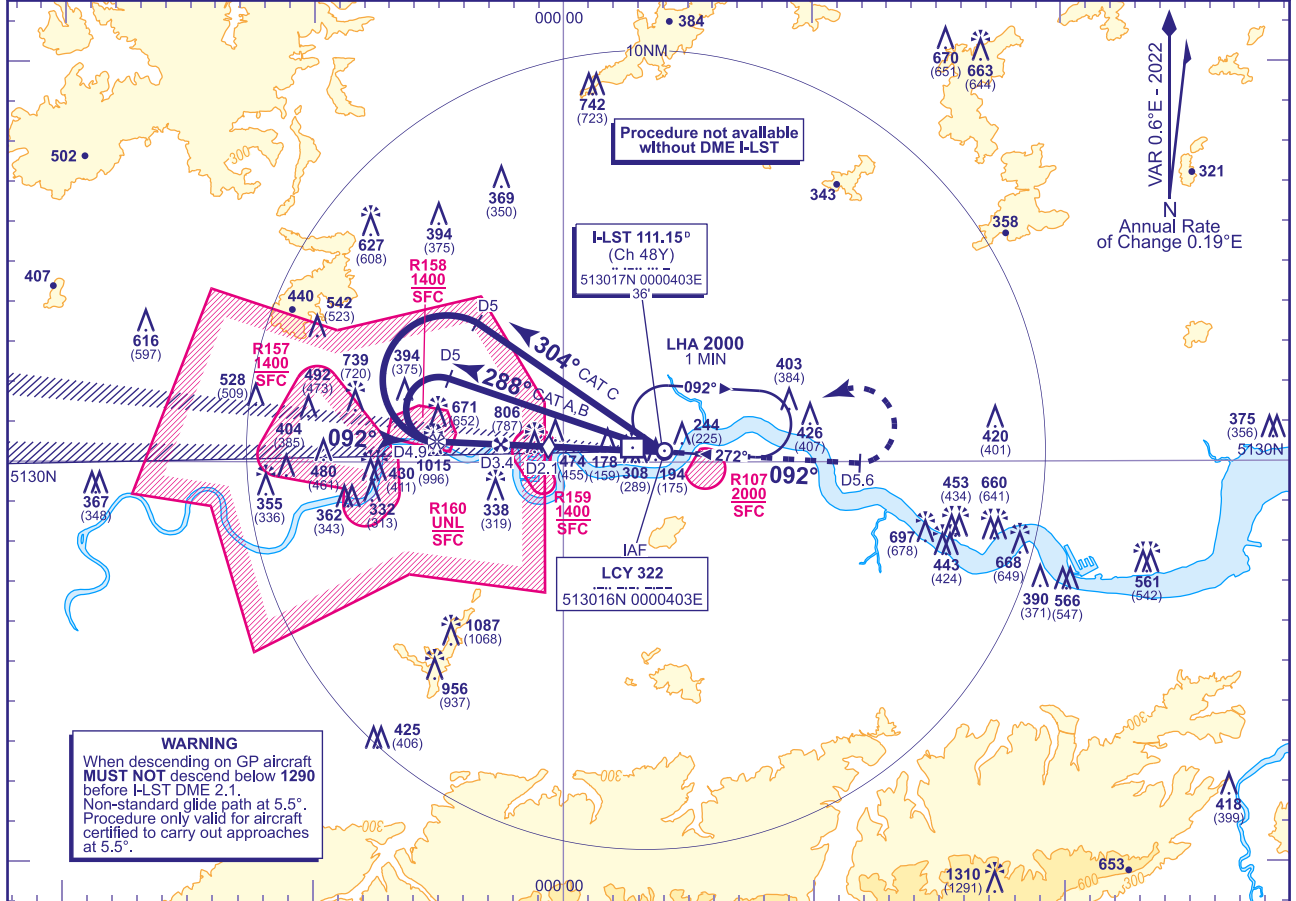
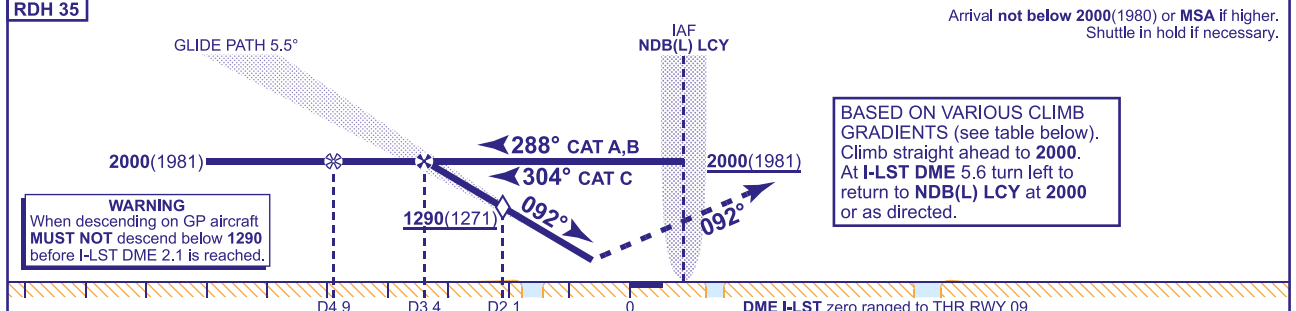


INSTRUMENT APPROACH CHART - ICAO

	APP 132.700	THAMES DIRECTOR	AD ELEVATION 20	LONDON CITY ILS(5.5°GP)/ DME/NDB(L) RWY 09 (ACFT CAT A,B,C) TRANSITION ALTITUDE 6000
	TWR 118.080 129.455	CITY TOWER	THR ELEVATION 19	
	RAD 133.455, 128.025	THAMES DIRECTOR	OBSTACLE ELEVATION 1310 AMSL (1291) (ABOVE THR)	
	ATIS 136.355	CITY INFORMATION	BEARINGS ARE MAGNETIC	



RECOMMENDED PROFILE GLIDE PATH 5.5°, 585FT/NM					
DME I-LST	3.4	3.0	2.1 (SDF)	2.0	1.0
ALT (HGT)	2000(1981)	1810(1791)	1290(1271)	1230(1211)	640(621)



Aircraft Category		A	B	C	BAe 146	Rate of descent	G/S KT	160	140	120	100	80
OCA (OCH)	CLIMB GRAD 2.5%	490(471)	520(501)	540(521)	460(441)		FT/MIN	1560	1365	1170	975	780
	CLIMB GRAD 3.0%	380(361)	410(391)	430(411)	350(331)							
VM(C)OCA (OCH AAL)		NOT APPLICABLE										

**RADAR VECTORING/RNAV1 TRANSITION**  
Aircraft will normally be radar vectored/positioned to the LOC by Thames Director to be established on the LOC no later than I-LST DME 4.9.

**CHANGE (10/23): STEP DOWN FIX. CLIMB GRADIENT. OBSTACLE. MAP TEXT.**